

# NUVA2

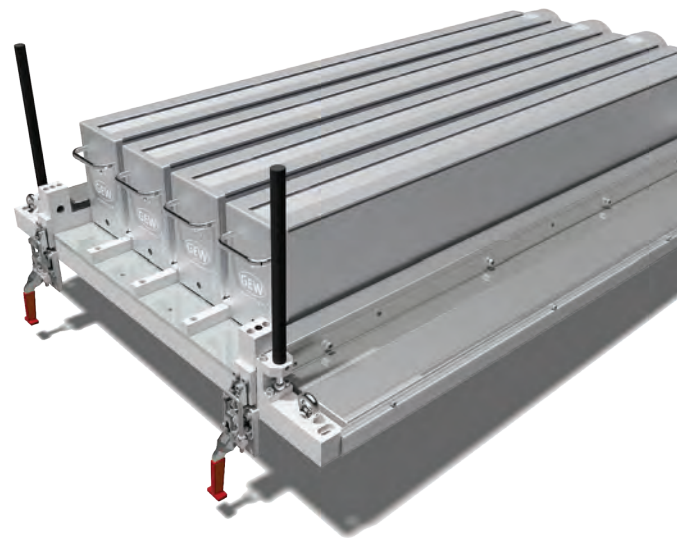
## FOR METAL DECORATING

UV Curing System

UV curing enables safer, faster and more profitable production than conventional thermal drying systems.

### Why use NUVA2?

- Fully air-cooled
- Compact rugged design
- Highest UV dose allowing lower power lamps to be used which means less heat on the material
- Highest quality of design and construction giving trouble free running
- Future-proof design... for GEW RHINO and RLT users, NUVA2 systems can be upgraded to UV LED by simply adding a LeoLED cassette and a chiller unit.



### Electrical integration behind the press

RHINO power supplies with integrated mains distribution for a 4-colour press with coater.

Cabinets can be grouped together or positioned along the length of the press



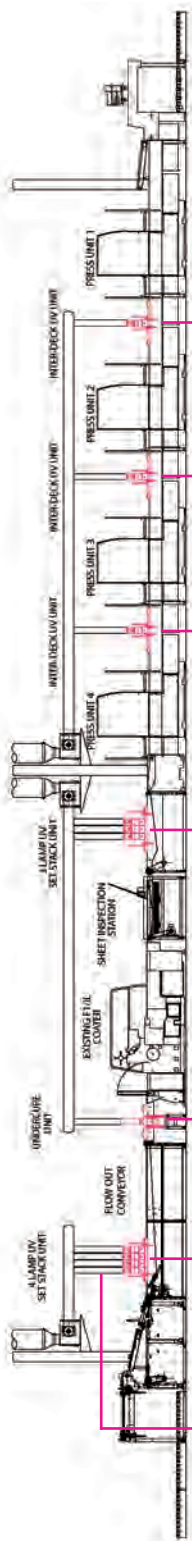
Designed and made in Britain

[gewuv.com](http://gewuv.com)

**GEW**  
...engineering UV

# Mechanical integration with the press

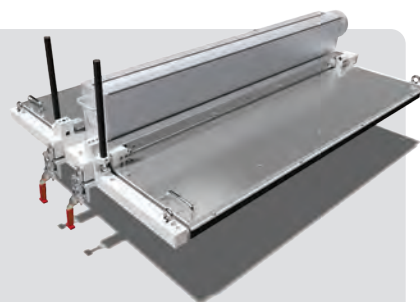
Each UV station is hinged to allow easy access to the under-bed sheet supports and belts. The units are easily lifted to 20° inclination and held in the raised position. A large air-cooled heatsink protects the conveyor from excessive heat build up.



## Interdeck

The single-lamp interdeck units are mounted over the belt section of the press infeed between each print unit.

An air cooled under-bed heatsink protects the conveyor from excessive heat build-up.



## Under-sheet

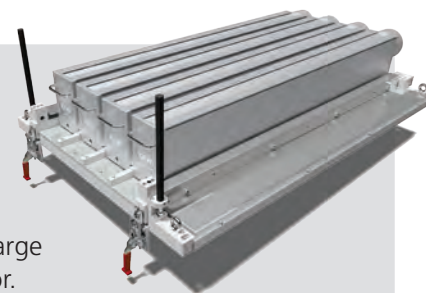
The single-lamp under-sheet unit is mounted after the coating station to cure any excess varnish that may have seeped over the sheet edge.

A hinging air-cooled heatsink shields the operator from heat build-up and stray light escaping from the unit.



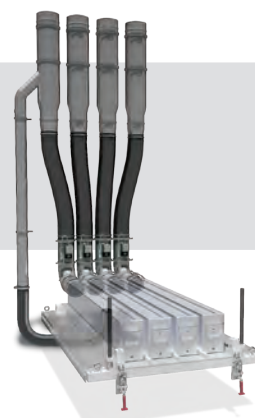
## Set-stack/final cure

The set-stack and / or final cure units are mounted over the belt section at the end of the press. Both are multi-lamp units and the number of lamps is determined by the machine configuration. These units are also fitted with large under-bed heatsinks to prevent heat build-up in the conveyor.



## Rigid ducting

Extraction fan and vertical ducting with integral autodamper to withdraw the UV lamp heat and ozone.



Please see the **NUVA2 brochure** for further system information and details.



### Head Office

GEW (EC) Limited, Crompton Way, Crawley RH10 9QR, UK

UK +44 1737 824 500

Germany +49 7022 303 9769

USA +1 440 237 4439

E sales@gewuv.com

W gewuv.com